



**THE PALM BEACH COUNTY SCHOOL BOARD**

SHOWN BELOW LEFT TO RIGHT

- Frank A. Barbieri, Jr., Esq. Chairman
- Chuck Shaw, Vice Chair
- Barbara McQuinn
- Karen Brill
- Erica Whitfield
- Marcia Andrews
- Debra Robinson, M.D.
- Jaiden Manuel, Student Representative



Donald E. Fennoy II, Ed.D., Superintendent  
The School District of Palm Beach County



October 1-31, 2020



## Save The Date...

**SY 2019 - 2020**

Wellness Promotion Task Force Meeting on...

**April 16, 2020** - (2:30 p.m. – 6:00 p.m.)

\*Meeting is subject to change.

**Disclaimer:** "Viewpoints, opinions and comments expressed during the Resource EXPOs and presentations are those of the individual speakers and may not indicate ratification, endorsement or sponsorship by The School District of Palm Beach County, and may be for informational purposes only."

February 27, 2020

# Wellness

P R O M O T I O N T A S K F O R C E

The School District of Palm Beach County, Florida

*Whole School, Whole Community,  
Whole Child Culture...*

A Symphony of Services Improving Learning and Health





**1<sup>st</sup> Resource EXPO & Networking Session – (8:00 a.m. – 8:25 a.m.)**

**Opening Remarks & Updates – (8:30 a.m. – 8:53 a.m.) – 23 minutes**

- **Welcome** – Allison Monbleau, *SFS Director*
- **Pledge of Allegiance** – Cassidy Earles, *Crystal Lakes Elementary*
- **Welcoming Rituals**
  - Call to Order... “Don’t Give Up On Me”
- **WPTF Purpose** – Dr. Seth Bernstein, *WPTF Community Chair*
- **Special Guest:**
  - **Chuck Shaw**, *School Board Vice Chair, District 2*
- **Wellness Promotion Policy Update** – Paula Triana, *Wellness Promotion Manager*
  - *Whole School, Whole Community, Whole Child (WSCC) Model*
  - *WPP Assessment to All Schools – Bulletin Out on February 25<sup>th</sup>*

**Presentations – (8:53 a.m. – 9:28 a.m.) – 35 Minutes**

- **“Birth to 22”** – 10 minutes
  - **Lisa Williams-Taylor**, *Chief Executive Officer, Children’s Services Council PBC*
  - **Tammy Fields**, *Director, Palm Beach County Youth Services Department*
- **“What’s Mental Health?”** – 20 minutes
  - **Mary Claire Mucenic**, *Director, Behavioral and Mental Health*
  - **Eleanor Craft**, *Specialist, Behavioral and Mental Health*
  - **Kathryn Bobby**, *Specialist, Behavioral and Mental Health*
- **“Behavioral Health-Focused Pilot Project”** – 5 minutes
  - **Miguel Benavente**, *Medical Administrator, Choice & Career Options*

**District’s WSCC Updates – (9:28 a.m. – 10:03 a.m.) – 35 Minutes**

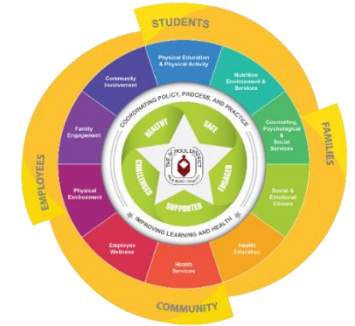
- **Physical Education & Physical Activity**
- **Nutrition Environment & Services**
- **Counseling, Psychological, & Social Services**
- **Social & Emotional Climate**
- **Health Education**
- **Health Services**

*Whole School, Whole Community, Whole Child Culture...*



- **Employee Wellness**
- **Physical Environment**
- **Family Engagement**
- **Community Involvement**

*Whole School, Whole Community, Whole Child Culture...*



**Presentations – (10:03 a.m. – 10:13 a.m.) – 10 minutes**

- **“Let’s Move Campaign”** – 5 minutes
  - **Vanessa Moss**, *Director of Communications*
- **“American Health Association”** – 5 minutes
  - **Sarah Godin**, *Youth Market Director*

**Awards and Recognitions – (10:13 a.m. – 10:25 a.m.) – 12 Minutes**

- **Healthy School/Well Workplace Awards** Sponsored by **Horace Mann**  
Presented by Carlye Fabrikant to the following schools:
  - *Don Estridge High Tech Middle and Marsh Pointe Elementary*
- **Relaxation/Wellness Room Awards** Sponsored by **Wells Fargo**  
Presented by Carlye Fabrikant to the following schools:
  - *Crossroads Academy and Jupiter Farm Elementary*
- **Relaxation/Wellness Room Awards** Sponsored by **Pure Wellness**  
Presented by Carlye Fabrikant to the following schools:
  - *Elbridge Gale Elementary, New Horizons Elementary, and Wellington Landing Middle*
- **Relaxation/Wellness Room Awards** Sponsored by **WPTF**  
Presented by Carlye Fabrikant to the following schools:
  - *Crestwood Middle, Don Estridge High Tech Middle, Poinciana Elementary, and Riviera Beach Preparatory*

**Optimistic Closing – (10:25 a.m. – 10:30 a.m.) – 5 minutes**

- **Paula Triana**, *Wellness Promotion Manager*
  - **Eileen Nieves**, *Social & Emotional Learning Specialist*

**2<sup>nd</sup> Resource EXPO & Networking Session – (10:35 a.m. – 11:00 a.m.)**

*Whole School, Whole Community, Whole Child Culture...*

